

ARE YOU READY

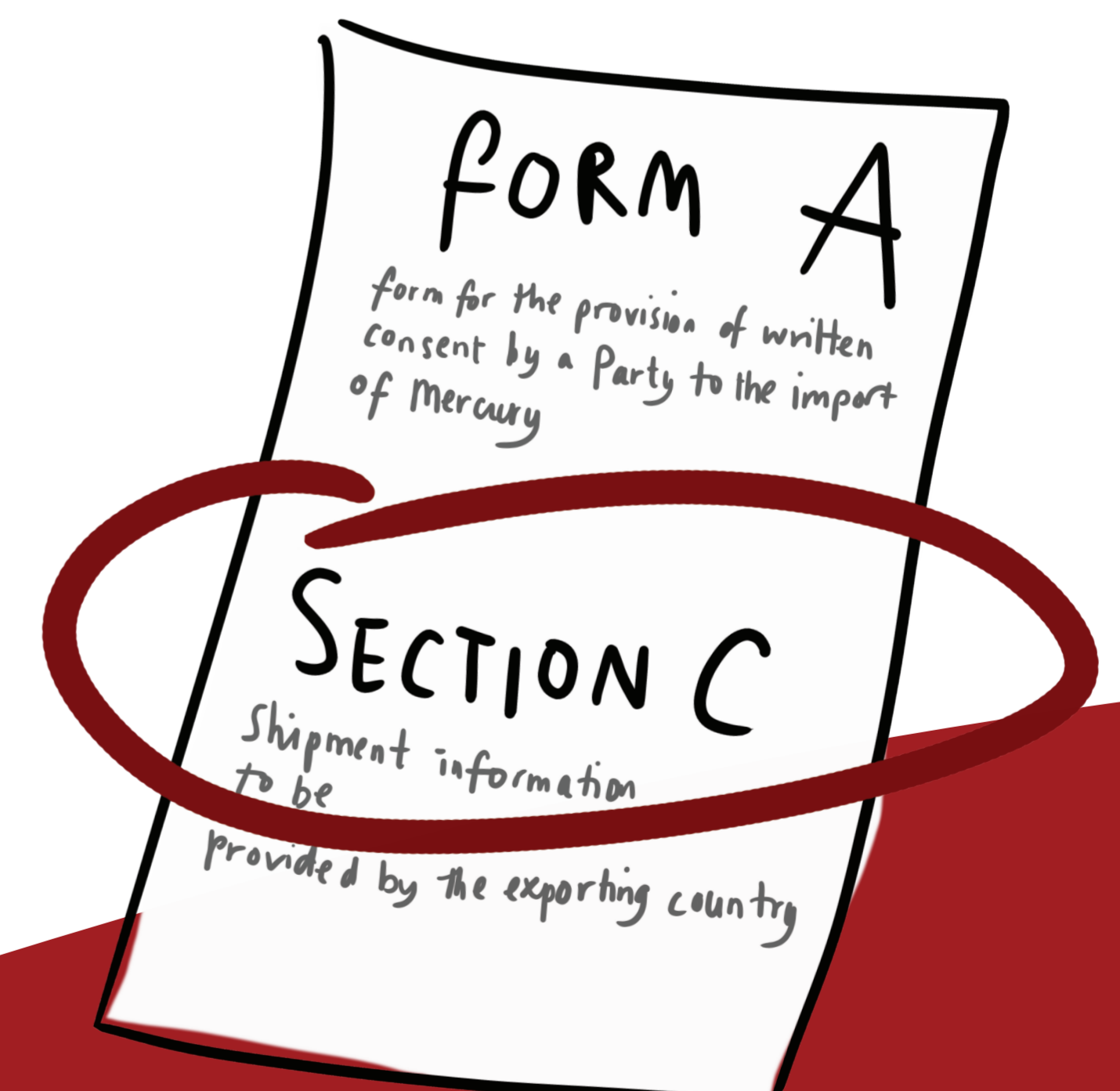
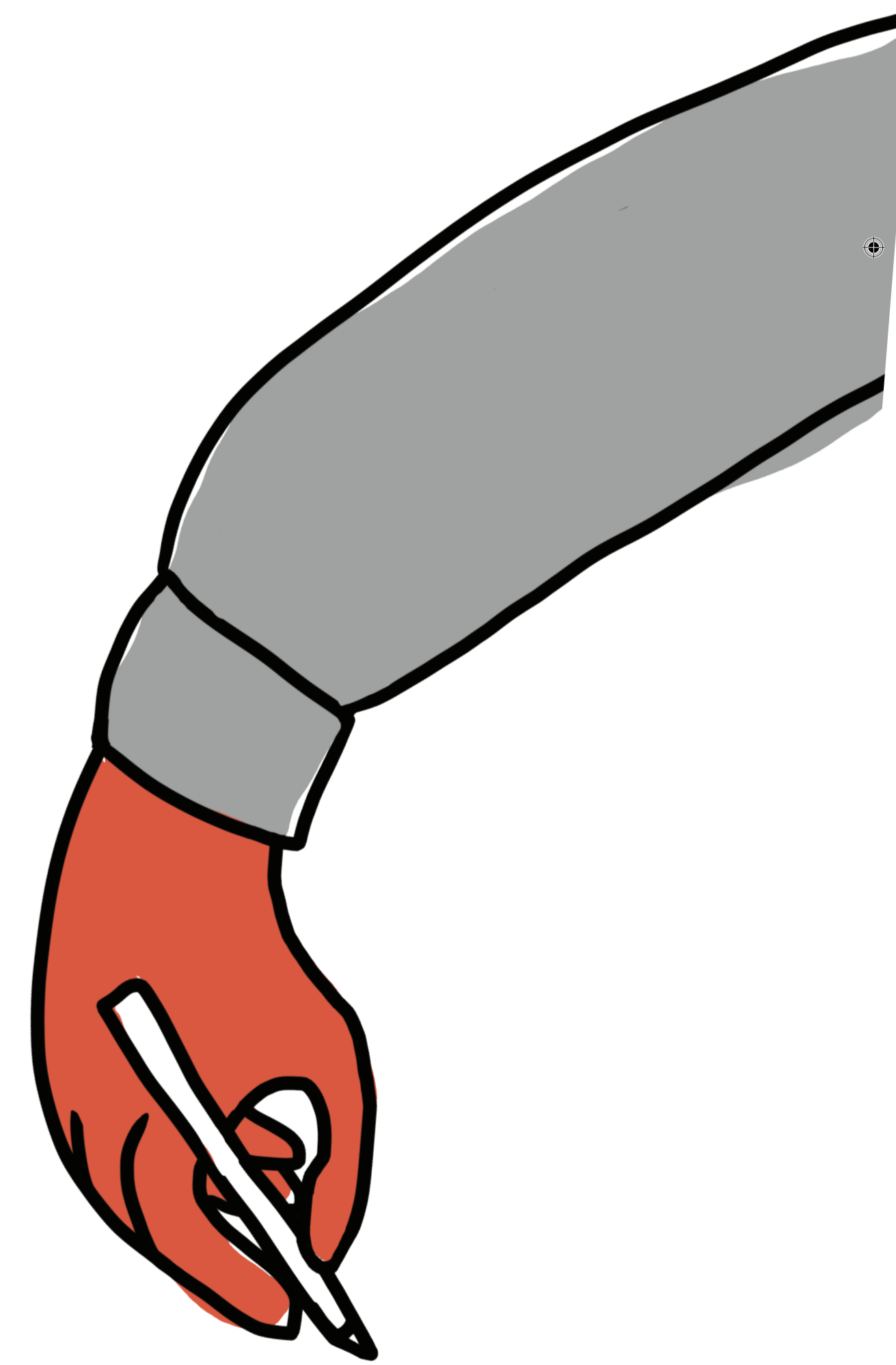
to meet your **immediate obligations** under the Minamata Convention?

CONTROLS ON MERCURY SUPPLY AND TRADE (Article 3)

- No new primary mining allowed.
- No primary mined mercury allowed for use in ASGM.
- Take measures to ensure excess Hg from chlor-alkali plant decommissioning is disposed, and not reused.
- Endeavour to identify mercury and certain mercury compound stocks greater than 50 metric tons.
- Endeavour to identify sources of mercury supply greater than 10 metric tons/yr.
- Implement PIC trade procedure using forms (appoint focal point for PIC).
- Biennial supply/trade report due **31 December 2019!**

PHASE-OUT AND PHASE-DOWN OF MERCURY USE IN PRODUCTS (Article 4)

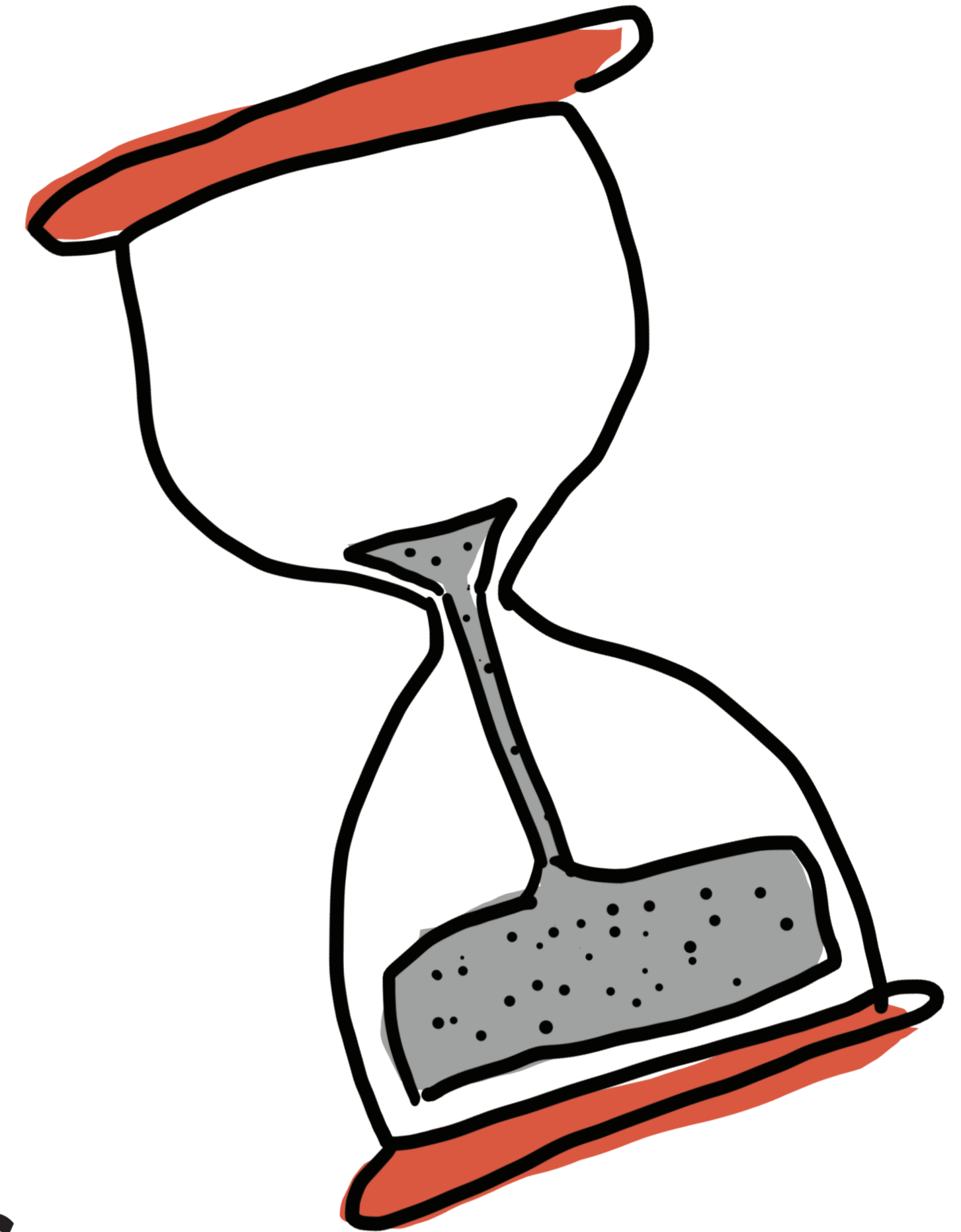
- Not allow import/export/manufacturing of Annex A, Part 1, Mercury Added Products (MAP) after **2020**, unless registered for an exemption upon becoming a Party
- Take measures to:
 - prevent incorporation of MAP in assembled products.
 - discourage new uses of mercury in MAPs
 - implement at least two of nine options on dental amalgam listed in Part II of Annex A.



PHASE-OUT AND PHASE-DOWN OF MERCURY USE IN PROCESSES

(Article 5)

- No use of mercury in acetaldehyde production (phased out in 2018).
- No new facilities allowed using mercury for vinyl chloride monomer (VCM) production, or for alcoholate production identified in Annex B.
- Take measures to address mercury emissions and releases from facilities using processes listed in Annex B.
- Within 3 years of becoming a Party, endeavour to identify facilities using processes listed in Annex B and estimate the amount of mercury or mercury compounds used in those facilities.
- Take measures to comply with process-specific obligations for production of VCM, alcoholates, and polyurethane as specified in Part II of Annex B.
- Discourage new industrial processes using mercury.



ARTISANAL AND SMALL SCALE GOLD MINING WHERE MERCURY IS USED (Article 7)

- All Parties take steps to reduce, and where feasible eliminate, use and emissions/releases of mercury in ASGM.
- National Action Plan required for Parties declaring ASGM more than insignificant. Deadline for submission is 3 years after becoming a Party, or 3 years after the declaration, whichever is later.

CONTROLS ON RELEASES TO LAND AND WATER (Article 9)

- Identify relevant point sources categories within 3 years of becoming a Party.

STORAGE (Article 10)

- Take measures to ensure temporary storage of mercury and mercury compounds intended for use is conducted in an environmentally sound manner.

WASTE MANAGEMENT (Article 11)

- Take appropriate measures so that mercury waste is managed in an environmentally sound manner, and any recovered mercury is used only for allowed uses under the Convention or disposed in an environmentally sound manner.

CONTAMINATED SITES (Article 12)

- Endeavour to develop strategy for identifying and assessing contaminated sites.